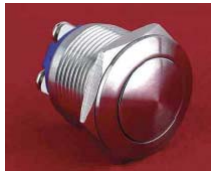


Pushbutton Switches

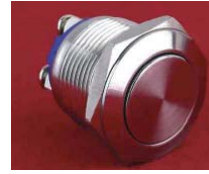
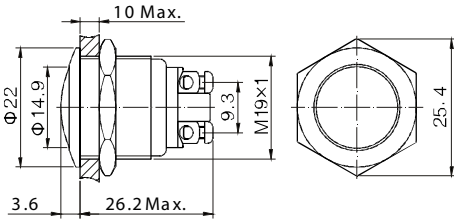
Anti-Vandal Pushbutton Switch - Mounting Hole Ø19mm

PAV19A Series



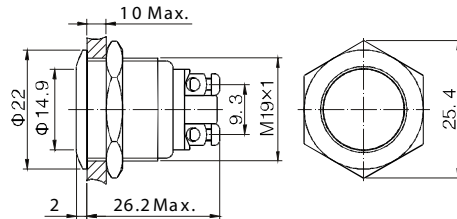
Terminal Type: Screw Terminal
Front Shape: Domed

PAV19ANDW0N



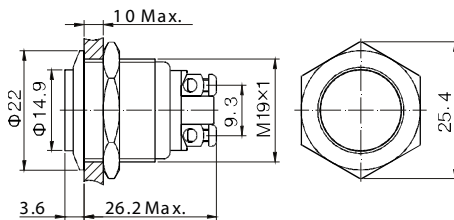
Terminal Type: Screw Terminal
Front Shape: Flat Round

PAV19ANFW0N



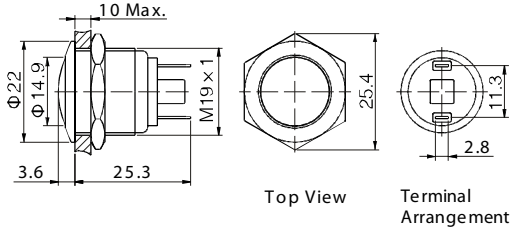
Terminal Type: Screw Terminal
Front Shape: High Round

PAV19ANHW0N



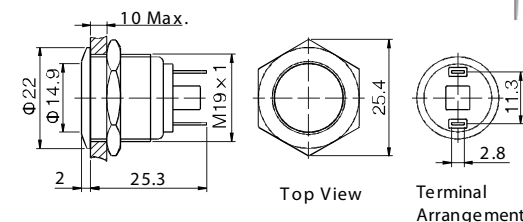
Terminal Type: Solder Lug 2.8x0.5mm
Front Shape: Domed

PAV19ANDS0N



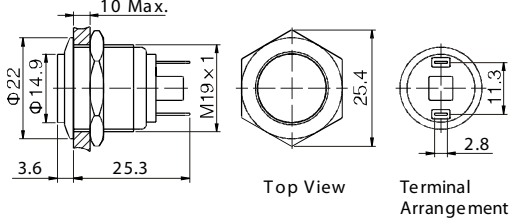
Terminal Type: Solder Lug 2.8x0.5mm
Front Shape: Flat Round

PAV19ANFS0N



Terminal Type: Solder Lug 2.8x0.5mm
Front Shape: High Round

PAV19ANH50N



How to order:

PAV19A

1 SWITCHING CIRCUIT:

- N 1NO (Standard)
- C 1NC (Made by request)

2 FRONT SHAPE:

- D Domed
- F Flat Round
- H High Round

3 TERMINATION:

- W Screw Terminal
- S Solder Lug (2.8x0.5mm)

4 ILLUMINATION:

- 0 No Illumination

5 ENGRAVING:

- A Stop
 - B Start
 - C Return
 - D Reset
 - E |
 - F ||
 - G ◀
 - H ↑
 - J ■
 - K ⏻
 - L ⚡
 - M ⚙
 - N ○
- (Other engraving can be made by request)

Specifications:

CHARACTERISTICS

- > Protection Degree: IP65
- > Anti Vandal Degree: IK09
- > Switch Rating: 2A 36VDC
- > Operation Type: Momentary
- > Contact Configuration: 1NO or 1NC
- > Contact Resistance: 50mΩ Max.
- > Insulation Resistance: 1000MΩ Min.
- > Dielectric Intensity: 2000VAC
- > Operating Temperature: -20°C to +55°C
- > Mechanical Life: 1,000,000 cycles
- > Electrical Life: 200,000 cycles
- > Panel Thickness: 1 to 10 mm
- > Torque: 5 to 14 Nm
- > Operation Pressure: about 4 N
- > Operation Travel: about 1.8mm
- > Switching: Double-Break Slow-Motion Contact

MATERIAL

- > Contact: Silver alloy
- > Button: Stainless steel / Brass (Nickel plated, Gold plated)
- > Body: Stainless steel / Brass (Nickel plated, Gold plated)
- > Base: PBT