


Pushbutton Switches

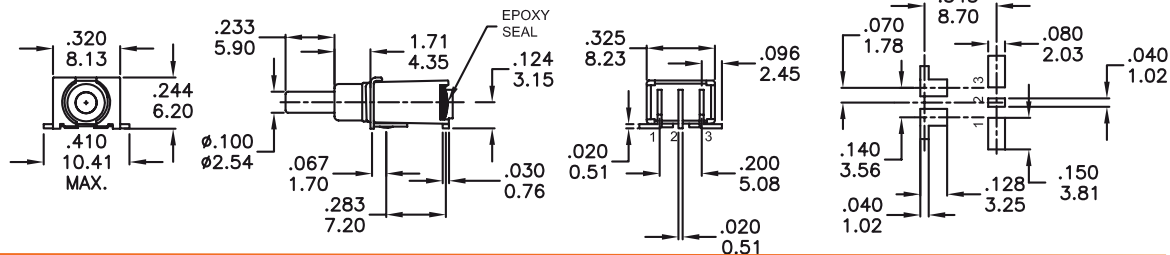
Sealed Sub-Miniature SMT Pushbutton Switches


PB64 Series

 UL versions available by request



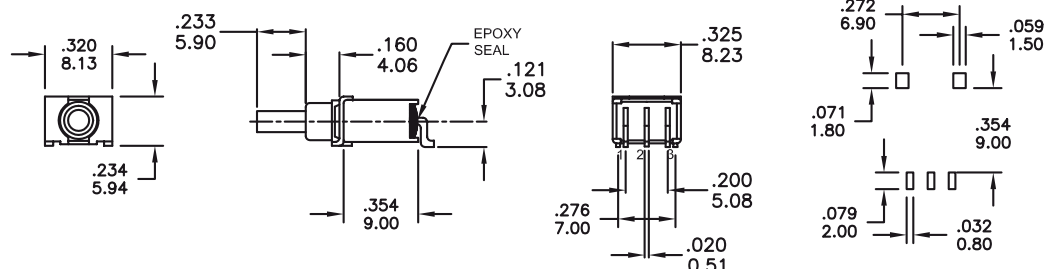
PB64S8TTAUEV




 UL versions available by request



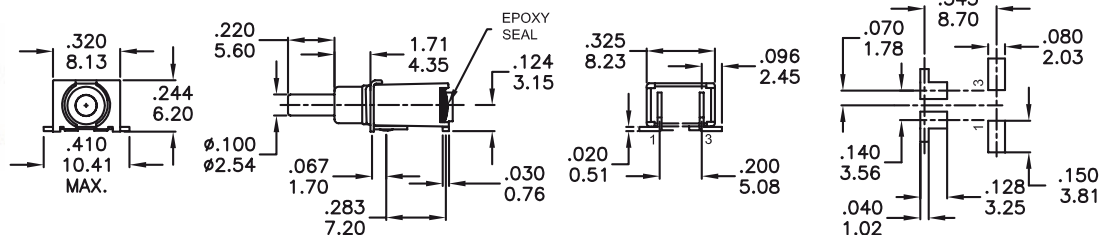
PB64S8TZAUEV




 UL versions available by request



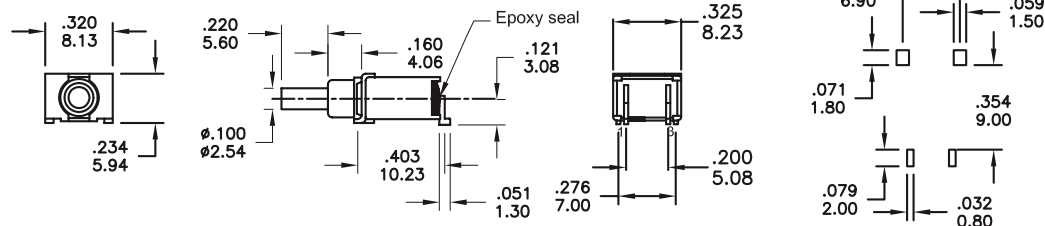
PB64S9TTAUEV



 UL versions available by request



PB64S9TZAUEV



How to order:

PB64 1 2 3 4 5

1 POLES & CIRCUIT:

S8 SP ON-MOM
S9 SP OFF-MOM

2 TERMINALS:

TT SMT Type (See drawing)
TZ SMT Type 2 (See drawing)

3 CONTACT MATERIAL:

AG Silver
AU Gold
UT Gold, tin-lead
GT Silver, tin-lead
UG Gold over Silver
UGT Gold over Silver, Tin-lead

4 SEAL:

E Epoxy (Standard)

5 ROHS & LEADFREE:

No Code RoHS Compliant
V RoHS & Lead Free

General Specifications:

MATERIALS

» Movable Contact & Fixed Terminals:
AG, GT, UG & UGT: Silver plated over copper alloy
AU & UT: Gold over nickel plated over copper alloy

MECHANICAL

» Operating Temperature: -30°C to +85°C
» Mechanical Life: 50,000 cycles

CONTACT RATING

» AG, GT, UG & UGT: 5A120VAC/28VDC 2A250VAC
» AU & UT: 0.4VA max. 20V max. (AC/DC)

ELECTRICAL

» Contact Resistance: 20mΩ max. initial @ 2-4VDC
100mA for silver & gold plated contacts
» Insulation Resistance: 1,000MΩ min.

Pushbutton Switches

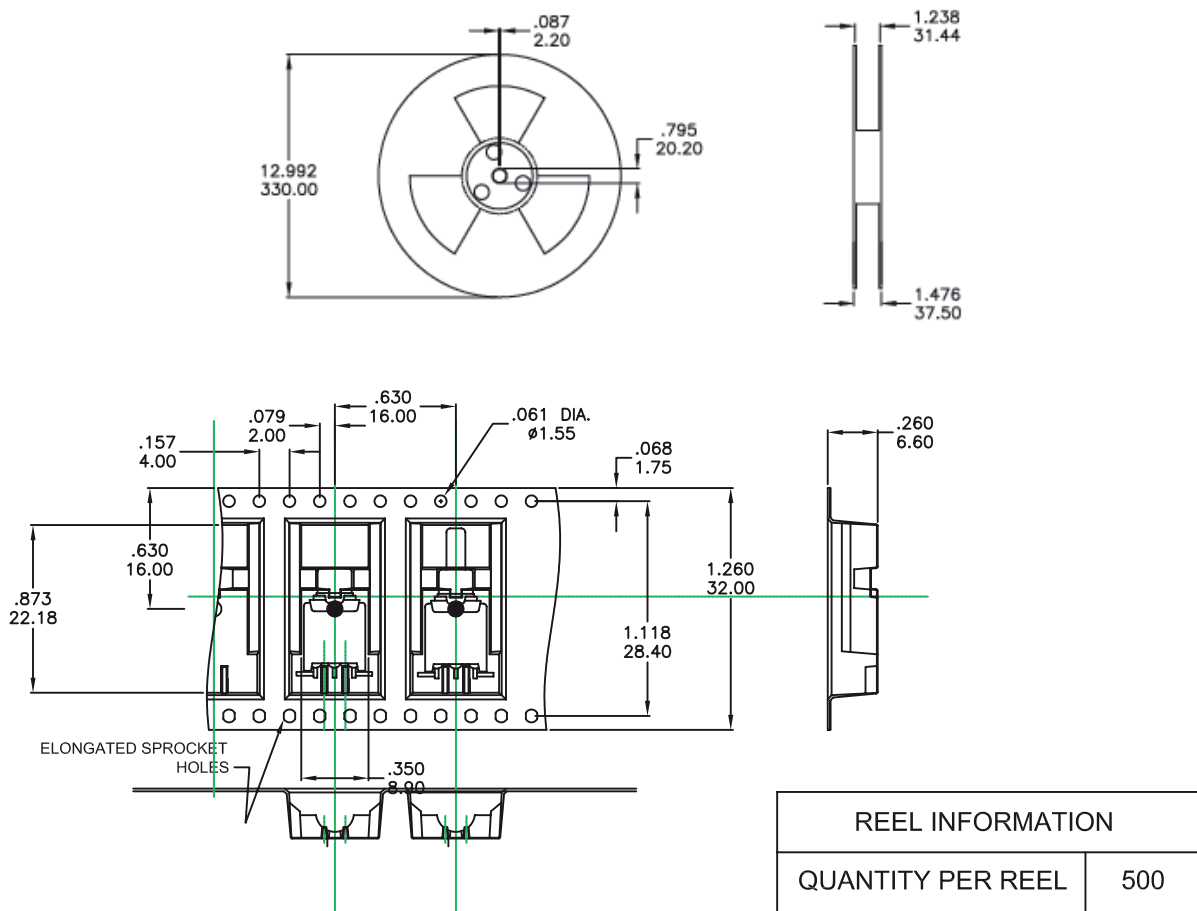
SWITCH FUNCTION

NO. POLES	MODEL NO.	SWITCH FUNCTION		CONNECTED TERMINALS		SCHEMATIC
		POS.1	POS.2	POS.1	POS.2	
SP	PB64S8	ON	MOM	2-1	2-3	
	PB64S9	OFF	MOM	OPEN	1-3	

MOM=MOMENTARY

PACKAGING

Switches available on embossed antistatic tape and reels.
Tape and cover strip are conductive for use near statically sensitive components.



SOLDERING PROCESSES

MANUAL SOLDERING : Use soldering iron of 30 watts, controlled at 350°C approximately 5 seconds while applying solder.

WAVE SOLDERING : Recommended Soldering Temperature: 260±5°C
Duration of Solder Immersion: 5 ±1 seconds
(PCB is 1.6mm in thickness)

SOLDERING : Vapor phase & IR- reflow soldering can be applied.

Temperature Profile

Zone	Room temperature	Time (Sec)
Pre-heat (A)	150°C	Min 120s
Soak (B)	180°C ~200°C	Min 150s
Peak (C)	200°C ~235°C	Min 30s
Peak (D)	235°C ~260°C	Min 40s
Peak (E)	260°C	Max 10s

